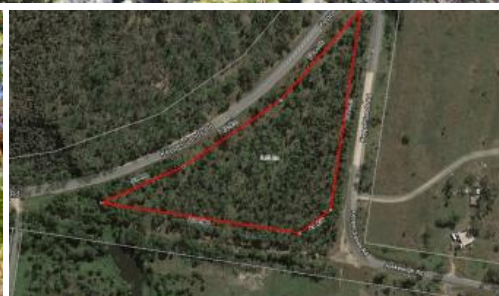


Sold

Lot 2 Keppel Sands Road, Keppel Sands



BACK TO NATURE

This rare 2.25 hectare block is in its natural state, enjoy living amongst the towering Livistonia Palms, Eucalypts and Melaleucas and the beach and Keppel Sands is only a few minutes drive away. A great spot for a weekend for a keen fisherman or nature lover, the area has beautiful natural scenery both onshore and offshore. A unique block waiting for a buyer who can appreciate the natural beauty it offers.

Disclaimer: Whilst every effort has been made to ensure the accuracy and thoroughness of the information provided to you in our marketing material, we cannot guarantee the accuracy of the information provided by our Vendors, and as such, Buehows Real Estate makes no statement, representation or warranty, and assumes no legal liability in relation to the accuracy of the information provided. Interested parties should conduct their own due diligence in relation to each property they are considering purchasing. All photographs, maps and images are representative only, for marketing purposes.

The above information provided has been furnished to us by the vendor/s. We have not verified whether or not that information is accurate and do not have any belief in one way or the other in its accuracy. We do not accept any responsibility to any person for its accuracy and do no more than pass it on. All interested parties should make and rely upon their own inquiries in order to determine whether or not this information is in fact accurate.

2.25 ha

Price	SOLD
Property Type	Residential
Property ID	350
Land Area	2.25 ha

Agent Details

Alan Buehow - 0417 616 859

Office Details

Emu Park
55 Ferguson St Emu Park QLD 4710
Australia
0417 616 859

